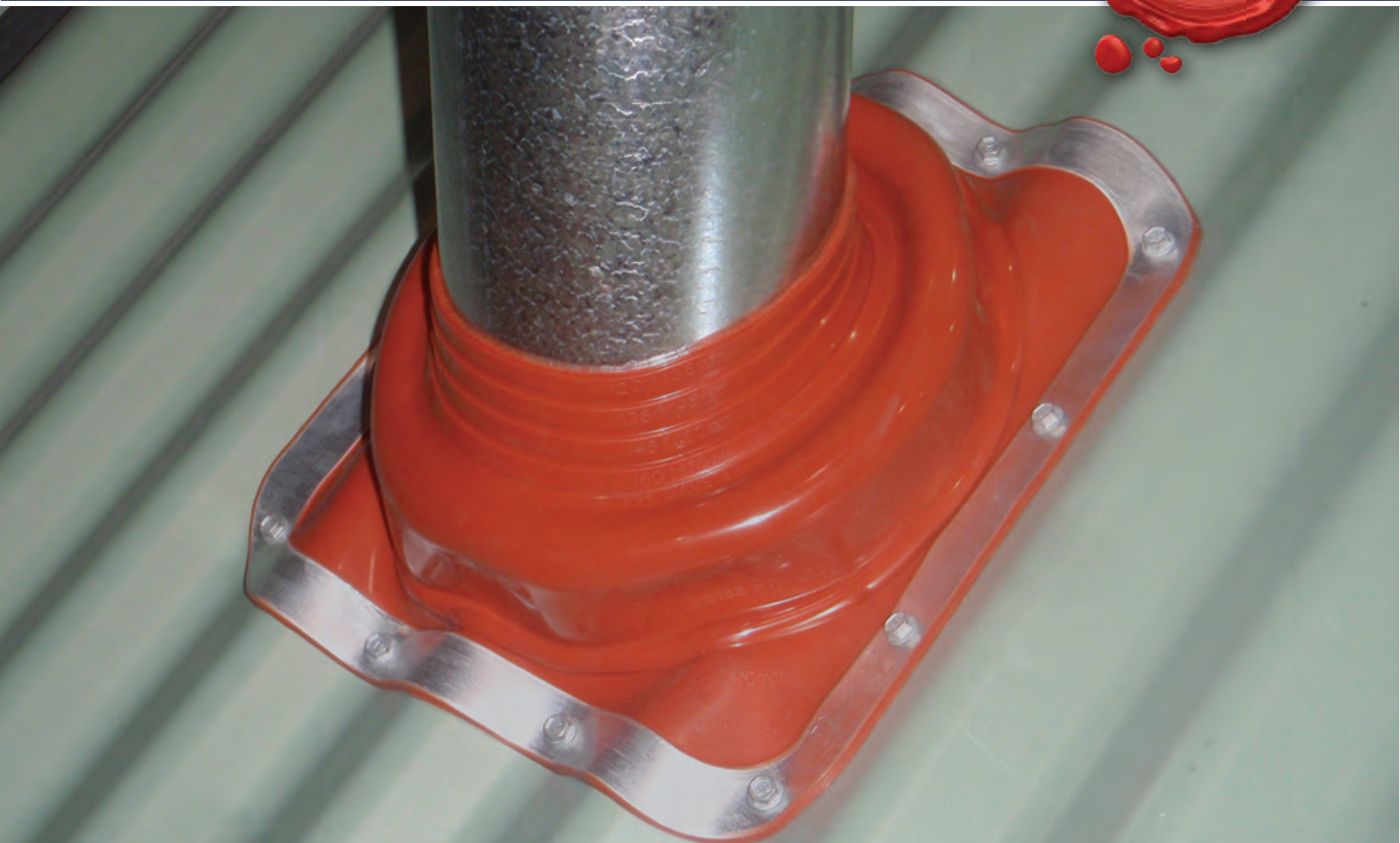




A Skellerup Industries Company



## Dektite® Silicone

Silicone can take  
the heat



FS 520679  
IN QUALITY ISO 9001



### Proven Design

DEKS has been associated with the roofing industry globally for 40 plus years



### Available in Square and Round Base

Conforms with and follows all roof profiles



### World Class Polymers

DEKS are internationally known for their polymers which is also ozone and UV resistant



### Twenty year warranty

Just fit it and forget it - we've got you covered

[www.deks.com.au](http://www.deks.com.au)

## Selection Guide

### Premium Square Base

DEKS Code	Description	Pipe OD		Base		Pitch	Carton QTY
		mm	inch	mm	inch		
<b>Red Silicone</b>							
DFE20MRE	Dektite Premium Micro	0 - 20	0 - 3/8"	71 x 71	2 3/4 x 2 3/4"	0-45° or 1 1/2"	20
DFE200RE	Dektite Premium #0	0 - 35	0 - 1 1/2"	100 x 100	4 x 4"	0-45° or 1 1/2"	20
DFE200RES	Dektite Premium #0 Solar	0 - 35	0 - 1 1/2"	100 x 100	4 x 4"	0-45° or 1 1/2"	20
DFE201RE	Dektite Premium #1	0 - 55	1/4 - 2 1/8"	139 x 139	5 1/2 x 5 1/2"	0-45° or 1 1/2"	15
DFE201RES	Dektite Premium #1 Solar	5 - 55	1/4 - 2 1/8"	139 x 139	5 1/2 x 5 1/2"	0-45° or 1 1/2"	15
DFE202RE	Dektite Premium #2	5 - 76	1/4 - 3"	178 x 178	7 x 7"	0-45° or 1 1/2"	15
DFE202REA	Dektite Premium 50-70	50 - 70	2 - 2 3/4"	178 x 178	7 x 7"	0-45° or 1 1/2"	15
DFE203RE	Dektite Premium #3	5 - 127	1/4 - 5"	221 x 221	8 3/4 x 8 3/4"	0-45° or 1 1/2"	15
DFE204RE	Dektite Premium #4	75 - 175	3 - 7"	280 x 280	11 x 11"	0-45° or 1 1/2"	10
DFE205RE	Dektite Premium #5	100 - 200	4 - 8"	310 x 310	12 1/2 x 12 1/2"	0-45° or 1 1/2"	10
DFE206RE	Dektite Premium #6	125 - 230	5 - 9"	363 x 363	14 1/4 x 14 1/4"	0-45° or 1 1/2"	10
DFE207RE	Dektite Premium #7	150 - 300	6 - 12"	456 x 456	18 x 18"	0-45° or 1 1/2"	10
DFE208RE	Dektite Premium #8	170 - 355	6 3/4 - 14"	496 x 496	19 1/2 x 19 1/2"	0-45° or 1 1/2"	5
DFE209RE	Dektite Premium #9	230 - 508	9 - 20"	681 x 681	26 3/4 x 26 3/4"	0-45° or 1 1/2"	5

### Original Round Base





DEKS Code	Description	Pipe OD		Base OD		Pitch	Carton QTY
		mm	inch	mm	inch		
<b>Red Silicone</b>							
DF200RE	Dektite Original #0	0 - 35	0 - 1 1/2"	93	3 3/4"	0-40° or 1 1/2"	40
DF201RE	Dektite Original #1	5 - 65	1/4 - 2 1/2"	124	4 3/4"	0-40° or 1 1/2"	10
DF202RE	Dektite Original #2	45 - 80	1 3/4 - 3 1/4"	162	6 1/2"	0-40° or 1 1/2"	10
DF203RE	Dektite Original #3	5 - 127	1/4 - 5"	202	8"	0-40° or 1 1/2"	10
DF204RE	Dektite Original #4	75 - 160	3 - 6 3/4"	238	9 1/2"	0-40° or 1 1/2"	10
DF205RE	Dektite Original #5	108 - 190	4 1/4 - 7 1/2"	276	11"	0-40° or 1 1/2"	5
DF206RE	Dektite Original #6	125 - 230	5 - 9"	322	12 3/4"	0-40° or 1 1/2"	5
DF207RE	Dektite Original #7	150 - 280	6 - 11"	372	14 3/4"	0-40° or 1 1/2"	5
DF208RE	Dektite Original #8	175 - 330	7 - 13"	422	16 3/4"	0-40° or 1 1/2"	5
DF209RE	Dektite Original #9	254 - 483	10 - 19"	647	25 1/2"	0-40° or 1 1/2"	1

### Available in Black and Grey EPDM or Red Silicone

EPDM will withstand constant temperatures at the roofline of -50°C (-58°F) to 115°C (239°F) and up to 150°C (302°F) intermittently  
Red Silicone will withstand constant temperatures at the roofline of -50°C (-58°F) to 200°C (392°F) and up to 250°C (482°F) intermittently

**Please Note** That the outside temperature of the pipe may be significantly different to the exit temperature of the appliance.

## Installation Information

-  Trim cone to suit pipe size using sharp tin snips.
-  Slide down pipe using water as a lubricant.
-  Apply sealant by turning back flexible flange.
-  Press base to the roof profile by hand. Smooth out any awkward creases. Don't fully extend to allow for vibration.
-  Fasten using self-sealing fastener or pop (sealed) rivets.
-  A Dektite maybe fitted on the 'diamond' for enlarged holes and penetrations on steep roofs up to 45° or deep corrugations.

- Always use the neutral cure low modulus silicone for sealing
- In corrosive and coastal environments fix using blind aluminium rivets

**Need to flash a square penetration? Contact DEKS to discuss the square flashing range.**